

cMEDA - Center for Microbiome Engineering & Data Analysis

has been officially designated by OVPRI as a
University-wide Research Center

Newsletter

Vision: to exploit the microbiome to
improve human health and the environment.

Dear cMEDA Friends,

Last week, we received some very good news. As you recall, a few months ago, we submitted a proposal to the OVPRI for 'university-wide status' for the cMEDA. Last week, we received notice that our proposal was approved and funded for a full two years, contingent on progress.

We believe that the decision was based on several attributes of our proposal:

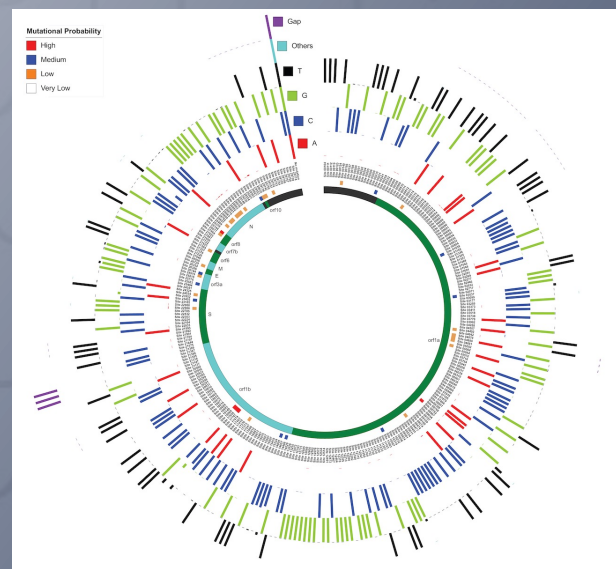
1. Our pan-university and cross disciplinary membership. We have significant numbers of participants from the COE, CHS, SOM, SOD, SOP, SON, and even the SOB, including members with expertise ranging from epidemiology and nursing through AI.
2. Our track record of mentoring early stage and transitioning investigators. We mentored more than a half dozen of which 100% achieved funding.
3. The strength of our members and their research proclivity. Almost all of our faculty members have significant extramural support and have been active in microbiome oriented research for some time.
4. Our plans for activities as a university-wide center.

cMEDA Mission:

to apply cutting-edge multi-omic technologies and quantitative computational tools in collaborative interdisciplinary research programs that will define and dissect the role of the microbiome in human health, disease, and the environment.

With the awarded budget, we will be able to:

1. Provide support and technology for investigators in their microbiome oriented research.
2. Bring in external speakers such as those we have had in the past (Ami Bhatt, Curtis Huttenhower).
3. Provide pilot grants for microbiome oriented research to cMEDA members.
4. Provide resources for summer students in cMEDA member laboratories.
5. Provide travel grants to cMEDA investigators to present their microbiome-oriented research.
6. Provide partial support for publication costs for cMEDA investigators' microbiome-oriented research.



Stay tuned for more for events planned for the cMEDA over upcoming months